



IMPORTANT NOTICE

This document is registered by Delta Line and may not be copied or reproduced completely or partially without the written permission of Delta Line.

Delta Line have the right to modify the manual and their products to improve the reliability and performances without being obliged to update the previously released products and manuals, or to inform the user about the concerning alterations. Delta Line doesn't take responsibility for any product use which deviates from the instructions given in this manual

Release	Date	Description	Release
1.00	0911/2023	GNO	First release

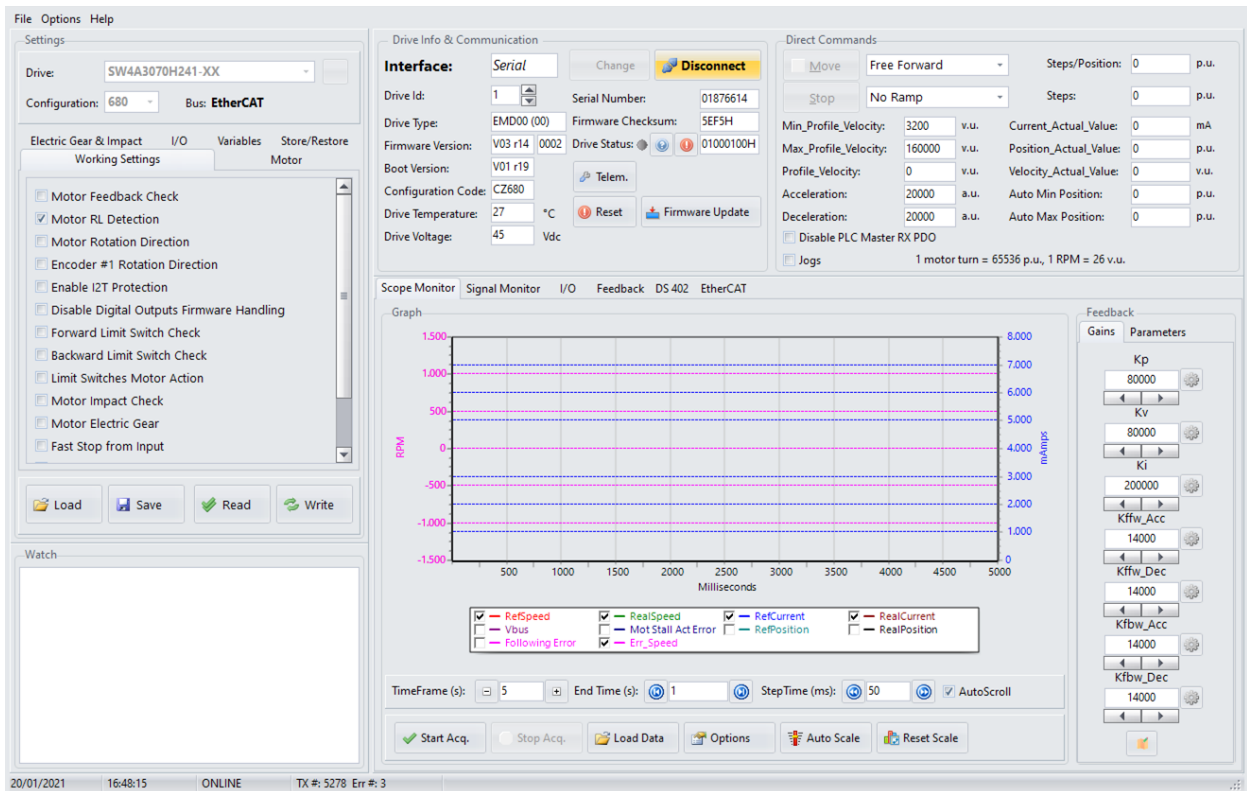


Via Prè d'là, 1
CH-6814 Lamone, Switzerland
Phone: +41 (0)91 612 85 00
Fax: +41 (0)91 612 85 19
E-mail: info@delta-line.com

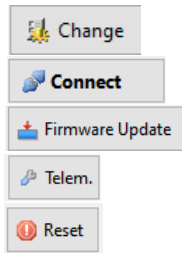
DL STUDIO Tool

The DL STUDIO (<https://www.delta-line.com>), is a complete software Tool for PC Windows used for the configuration and diagnostic of Delta Line drives. Through simple windows and wizards it is possible to monitor and set all the operating parameters required for the drives and application. The Tool integrates a digital oscilloscope to watch and sample in real time the main parameters of the motion profile used for the motor control. It is also available a specific window (and sub-windows) dedicated to DS402 profile and related functions. The connection between the PC and the drive can be made via dedicated Serial Interface (Service Interface on drive) with a specific Delta Line cable.

Main Window



Drive Info & Communication Window



Change the PC – Drive communication settings

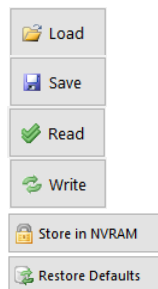
Connect / Disconnect to drive

Update the drive's Firmware

Open the Telemetry Window

Software Reset of the drive.

Settings Window



Load a previously saved configuration file

Save the current parameter's value in a configuration file

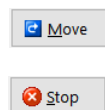
Read the parameter's value from drive

Write the current parameter's value to the drive

Store the current drive's parameters in NVRAM

Restore the default value for drive's parameters

Direct Commands Window



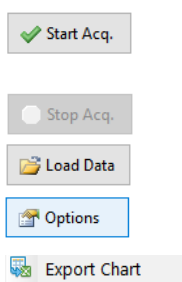
Move the motor according to the selected mode.

A warning message will popup that the drive will be set in operation enable modality.

Stop the motor according to the selected mode.

A warning message will popup that the drive will be set in operation enable modality.

Scope Monitor Window



Start the acquisition of some drive's internal variables. Useful for Feedback tuning or to verify the motion behavior.

Stop the acquisition.

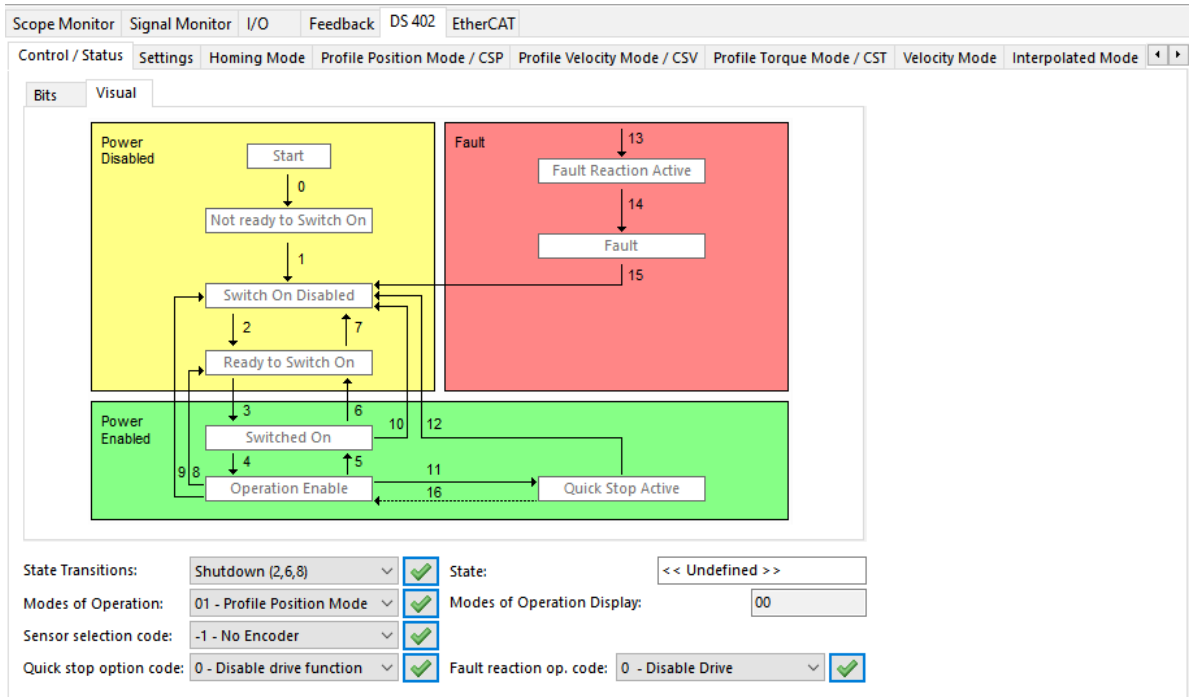
Load a previously saved acquisition.

Change the graph / series option.

Pressing left mouse button inside the graph a pop-up menu is showed.
The Export Chart function enable the export of the graph values in various formats (Excel,Text,HTML).

DS402 Window

The DS402 Window is useful to check the drive's current state machine condition and to change all the DS402 parameters. If the Master is not connected to the drive is it possible to force the state machine change pressing on the number corresponding to the desired transition.





Delta Line SA
Via Prè d'Ilà, 1
CH-6814 Lamone
Switzerland

+41 (0)91 612 85 00
info@delta-line.com
www.delta-line.com

Headquarters

Delta Line North America, Inc DTC
Tech
4600 South Syracuse, 9th Floor
Denver, CO 80237, USA

+1 303 256 6212

infous@delta-line.com

North America

Changzhou Delta Line Trade
Company Limited, 414
Building 1,
FuChen HuaYuan
New North District Changzhou,
Jiangsu, China

Asia